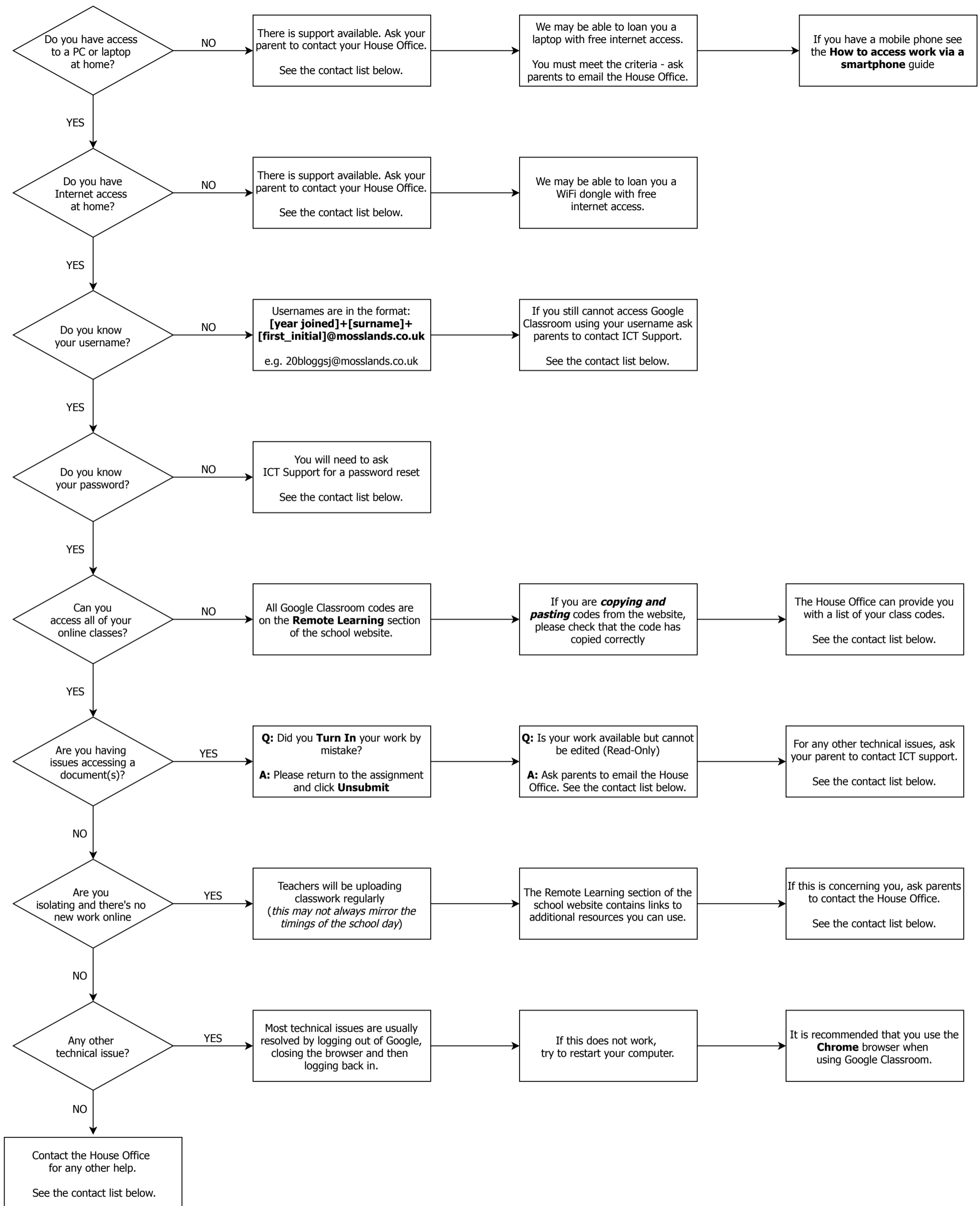


# Students' Troubleshooting Guide



Use the private comments in your assignments to contact your teacher so that they can try to resolve any issues you may have.

Teachers receive email notifications of any comments you make and can respond within an acceptable timeframe.

**House Office Contacts**  
 faraday@mosslands.wirral.sch.uk,  
 grenfell@mosslands.wirral.sch.uk,  
 ruskin@mosslands.wirral.sch.uk

**ICT Support**  
 ictsupport@mosslands.wirral.sch.uk