



MOSSLANDS SIXTH FORM

PROSPECTUS 2025

CARE ● **COMMITMENT** ● **CHALLENGE**

CONTENTS

2 WELCOME

3 ABOUT US

4 ETHOS & VALUES

5 OUR TEACHERS

6 WHERE OUR STUDENTS ENDED UP

7 PAST STUDENTS

9 STUDENT PATHS

11 FURTHER OPTIONS

12 CAREERS ADVICE

13 PATHWAYS

14 OUR COURSES

53 PASTORAL CARE

54 HOW TO APPLY

55 HOW TO FIND US

56 ASSISTANT HEAD OF SIXTH FORM

57 NOTES

WELCOME

I am delighted that you are showing an interest in joining the Sixth Form at The Mosslands School. Every year the majority of our Year 11 students are offered a place as well as a number from other schools in the wider area. I am extremely proud of the environment, atmosphere and work ethic in our Sixth Form and our achievement at all levels.

The atmosphere we cultivate in our Sixth Form enables you to work in a mature and professional manner, as we encourage you to take responsibility for your studies and conduct. In return for our commitment and dedication to you, we expect hard work and a positive contribution to the ethos of our whole school community.

The subjects and courses on offer are detailed within the Sixth Form section of the school website where they can also be downloaded. They are also available from subject departments and the Sixth Form Team.

I hope you enjoy reading this prospectus and can take the time to find out more about The Mosslands School Sixth Form.

If you have any questions regarding any of the information in this prospectus, or if you would like to arrange a visit to the school, please feel free to contact me directly.

I look forward to meeting you and to working with you in the future.



Miss J Carty
Head of Sixth Form

ABOUT US



**Liverpool University
Scholars Programme**



**Dedicated Form
Tutor**



**Free Private &
Confidential
Counsellors**



**Work Experience
Opportunities**



APST



**Gold Duke of
Edinburgh's
Award**



**Gold
Partnership with
SAE Institute**



**Links To Local
Apprenticeship
Providers**

ETHOS & VALUES

Our core values “Care, Commitment and Challenge” and TRACK values “Teamwork, Respect, Ambition, Community, Knowledge” underpin everything we do.

TEAMWORK



We expect all members of our community to work together, value the contribution of others and contribute positively to all aspects of school life.

RESPECT



All members of our community will be tolerant of others, treating them with care and dignity, taking pride in the school and setting high standards for themselves.

AMBITION



In everything we do, we have the highest expectations for ourselves and others

COMMUNITY



Together, through sharing a common purpose, we build a strong sense of belonging and contribute positively to the lives of others.

KNOWLEDGE



We have an unwavering commitment to the pursuit of lifelong learning for all as the route to personal development and improved quality of life.

OUR TEACHERS



1

**They are specialists
in their subjects**



**Friendly, supportive
and approachable**



**Will help you
succeed beyond
Sixth Form**



**Provides the best
pastoral support in
the area**



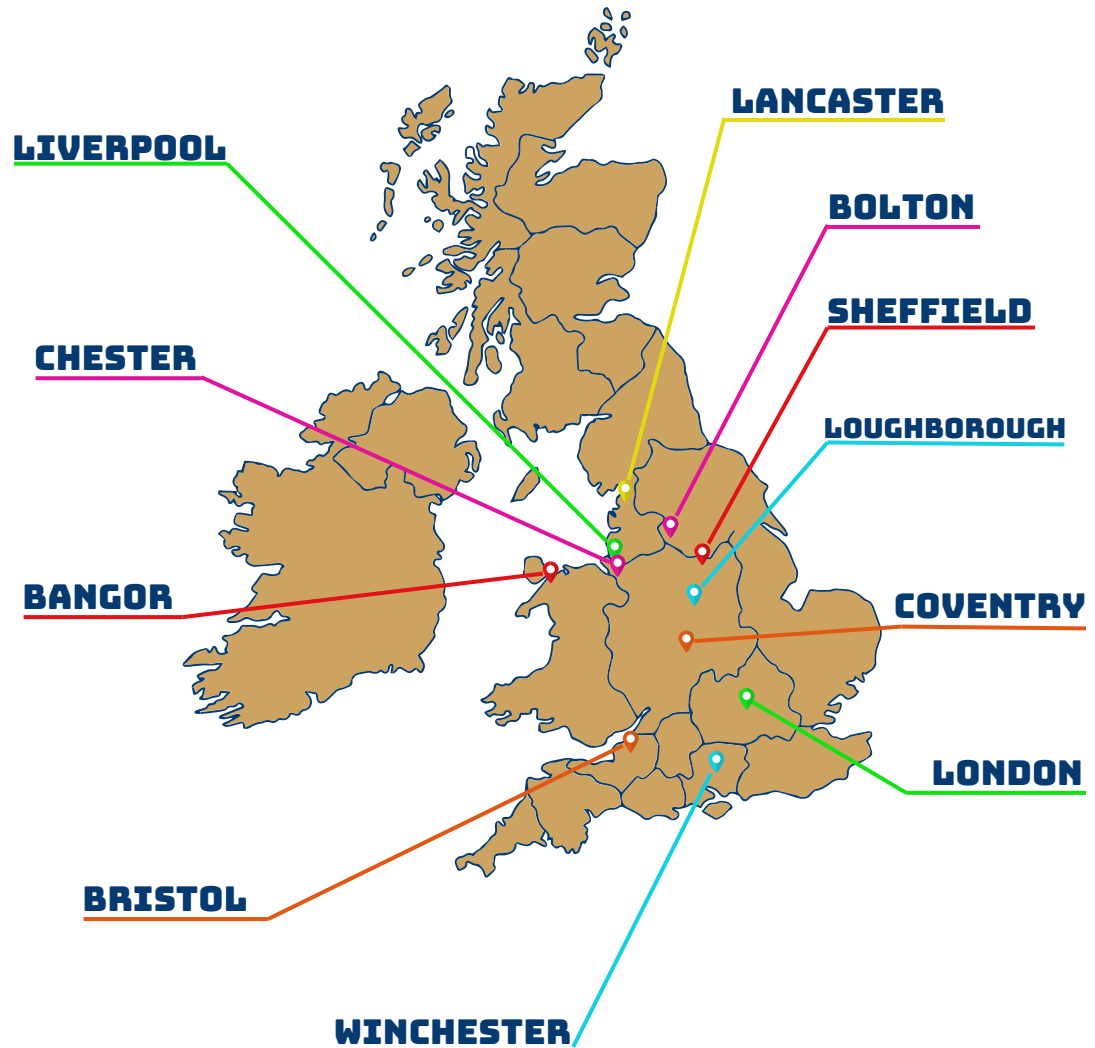
**Set targets to help
understand your
progress**



**Encourage mutual
respect and show
personal attention**

WHERE OUR STUDENTS ENDED UP!

These locations represent where our students decided to study after Sixth Form



PAST STUDENTS



We are very proud of what our previous students have come to achieve in their lives after leaving us here at Mosslands Sixth Form. Here is how they progressed.

Abbie F.

My time at Mosslands Sixth Form taught me resilience, strength, and leadership. I implement these skills on a daily basis as a frontline worker. Teachers taught me that I could achieve anything I put my mind too and I did just that! I am currently studying biology at Edge Hill University and I'm going on to the MSc Nursing course next year!

Tom R.

While at Mosslands Sixth Form I had studied IT, A level History & A level Business where I achieved D*, E * D.

Afterwards, I moved onto a 4 year apprenticeship in Composites Engineering thanks to the links that Mosslands Sixth Form has with apprenticeship providers. This was with Teledyne CML & The Engineering College.

I am now a qualified Ultrasonic NDT Technician and have gained employment with the Aston Martin F1 Team.

Callum T.

At Mosslands Sixth Form I studied for a Diploma in Applied Science, IT & EQ which I had achieved Merit, Merit, Distinction* & E. From this I went on to study Cyber Security at Chester University. After graduating I have gone to work as a Network Engineer / Cyber Security Manager at Capital Networks LTD.

Patrick G.

I studied at Mosslands Sixth Form where I studied Biology, IT, Sports Science & Psychology, leaving The Mosslands Sixth Form with A*, B, B, B.

The Mosslands Sixth Form set me up perfectly to study Psychology at Loughborough University. I graduated with a 2.1 whilst perusing my passions. Even being sponsored to go on a trip to China to study their government initiatives of behavioural management.

After graduating, I have begun a Human Resources Graduate Scheme with one of the world's leading freight forwarders. This has enabled me to have opportunities I could have never dreamt of, even going to live in Hamburg, Germany for 3 months at the start of 2024. I have been able to connect with people all over the globe and being in such a large organisation gives me the flexibility to develop my career how I want to and continue to follow what I am interested in as my career develops.

Daniel D.

While at Mosslands Sixth Form I was appointed as Deputy Head Boy and Studied Applied Science Diploma, BTEC Business and EPQ where I achieved Pass, Pass, Merit & E.

I then went onto study International Relations at The University of Chester for three years.

Once I had completed my degree, I moved onto The University of Liverpool where I studied a master's degree in international relations and security. After graduation I got a job within the Ministry of Justice at Sefton Magistrates Court.

In this role, I meet regularly with the legal advisors and the magistrates while also carrying out warrant and summons applications among other administrative tasks. Soon I will be leaving the Ministry of Justice to take up a role in the Home Office as an executive officer within Immigration Enforcement.

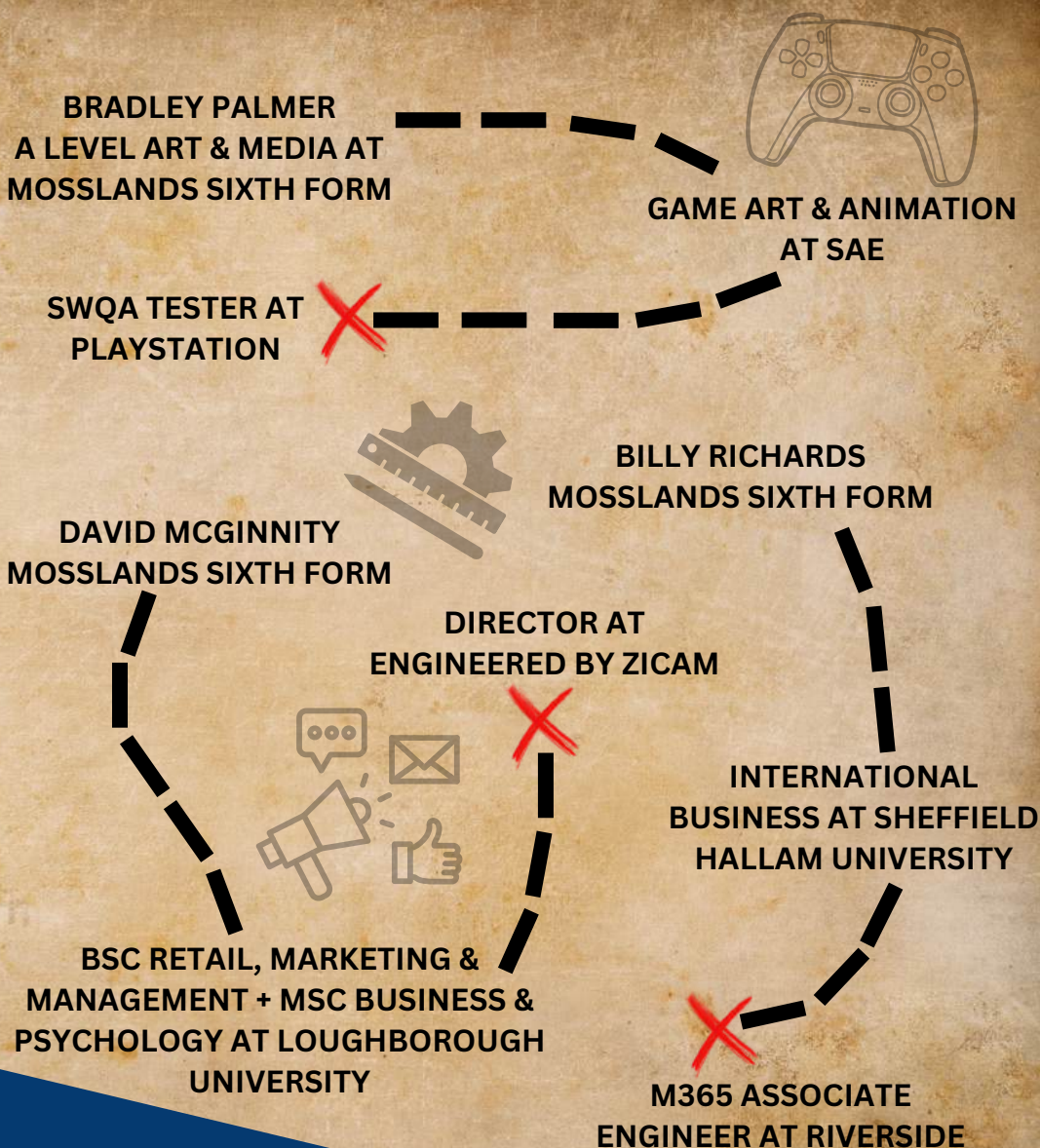
Will G.

I am currently working as a Digital Marketing Consultant for one of the fastest-growing SEO agencies in the UK, Quirky Digital. However, this would not be possible without the incredible help from the Mosslands Sixth Form. Their guidance and expertise allowed me to find a Level 3 Junior Content Producer apprenticeship during the coronavirus crisis.

My first placement was at Brackenwood Infant School, where I took charge of social media, including mostly Twitter, and had the freedom to create engaging social media content for the parents.

After 18 months, I landed a job role at Quirky Digital after obtaining a distinction from my apprenticeship. I am now looking forward to my time here at Quirky Digital, where I will continue to learn and understand marketing to the highest level, ultimately allowing me to pivot into different opportunities that I want to achieve later in life.

STUDENT PATHS



ANDREW EUERS
MOSSLANDS SIXTH FORM

JAY HENSON
MATHS, IT & HISTORY AT
MOSSLANDS SIXTH FORM

CYBERSECURITY AT
CHESTER UNIVERSITY



SOFTWARE DELIVERY
CONSULTANT AT
DYNATRACE

ENGINEERING
APPRENTICE AT AIRBUS

JAMIE COOPER
BIOLOGY, MATHS,
PSYCHOLOGY AT
MOSSLANDS SIXTH FORM

BIOCHEMISTRY AT
SHEFFIELD HALLAM
UNIVERSITY

PHD IN ONCOLOGY,
CANCER & BIOLOGY AT
OXFORD BROOKES
UNIVERSITY

SKILLED AIRCRAFT FITTER
AT AIRBUS FILTON

FURTHER OPTIONS



Following on from your Sixth Form studies you will have a variety of opportunities in education, employment and training. These are all the opportunities that our Sixth Form students have embarked on after Mosslands Sixth Form.



UNIVERSITY



APPRENTICESHIP



VOLUNTEERING



EMPLOYMENT



DRAMA SCHOOL



SAE INSTITUTE



ART COLLEGE



ENTREPRENEURSHIP

CAREERS ADVICE

Planning and preparing for your future requires you to be proactive from an early stage. Mosslands Sixth Form is here to support every student with their career planning. We work in partnership with Karen Rowles, our dedicated independent Career Connect careers adviser.

Karen is available in Sixth Form three days per week offering individual guidance appointments, delivering careers sessions and organising careers events that allow our students to explore, aspire and work towards their individual career goals.

Students can make a careers appointment by emailing Karen directly or request a meeting through the Sixth Form office.

Karen Rowles - karenrowles@mosslands.wirral.sch.uk



PATHWAYS



PATH 1

Two years

Combination of A
levels/BTEC & CTEC
qualifications

Pick a minimum of
three courses,
maximum of four

PATH 2

Two Years

Extended Diploma
(equivalent of three
A levels)

Choose between
Sport & Physical
Activity or Uniformed
Protective Services.

PATH 3

One Year

Level 2 Travel and
Tourism

Plus BTEC Work
Skills and re-sits in
maths and English if
needed

COURSES



BIOLOGY

About the course

Biology is an exciting area of study at the moment with a growing interest and focus on genetic engineering, gene technology, stem cell research, the human genome, medicine and environmental issues, there has never been a more exciting time to become a Biologist and the AQA course in Biology offers an excellent way in. The new specification has resulted in a slimmed down assessment structure that takes on board the changes already brought in at GCSE for Science.

AS Biology

The AQA specification for AS Biology will cover the following topics.

1. Biological molecules
2. Cells
3. Exchange of substances
4. Genetic information and variation

A2 Biology

The AQA specification for A2 Biology will in addition to the areas covered in AS cover the following topics.

1. Energy transfers
2. Responding to stimuli
3. Population genetics and evolution
4. The control of gene expression

Entry requirements:

At least 5 GCSE grades at 5-9

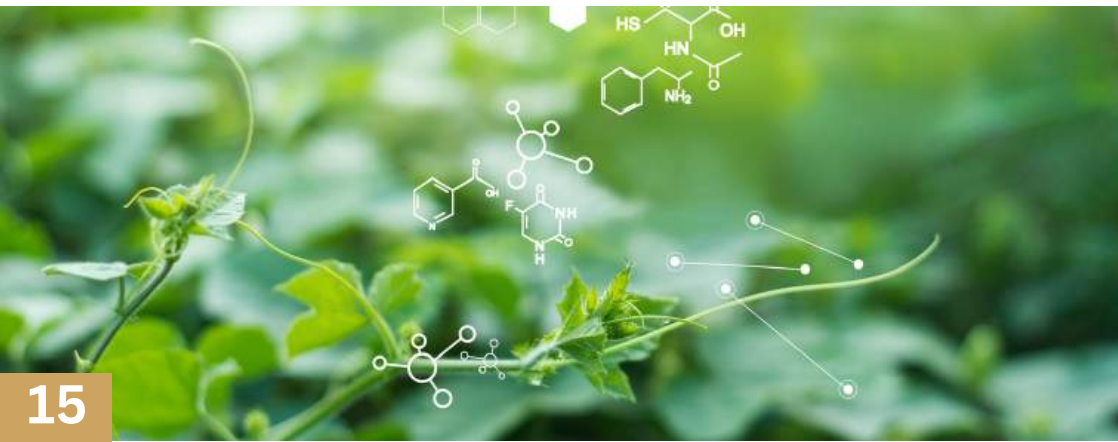
Students who wish to take Biology at A-level need to achieve grades 7 - 9 at GCSE Biology.

Qualification details:

AQA AS/A2 Biology

Specification code: 7401 7402

QAN code: 601/4624/2; 601/4625/4





What is expected of you:

You will be expected to attend all lessons and complete all tasks on time. You must have a good understanding of GCSE Maths and Chemistry as you will be expected to carry out calculations. There is also a major emphasis on Biochemistry in all modules. You should be organised and able to manage your time affectively.

What it prepares you for:

Higher Education

- Veterinary science
- Medicine
- Genetics

Careers

- Medicine
- Vet
- Microbiologist
- Forensic science
- Biochemist

How will it be assessed?

The above content together with the content covered in AS will be examined by 3 x 2 hour exams.

You will also have to complete 12 assessed practical tasks throughout the course.

For more information:

If you are an internal applicant, please talk to your biology teacher about the possibility of studying biology in the Sixth Form. Or you may choose to talk to Mrs K Weston (Senior Lead: Science)

If you are an external applicant and would like more details about this course please email sixthform@mosslands.wirral.sch.uk

CHEMISTRY

About the course:

Chemistry is an exciting A-level option for those looking for careers in the sciences and engineering. The new specification has resulted in a slimmed down assessment structure that takes on board the changes already brought in at GCSE for Science.



Entry requirements:

At least 5 grades 7- 9 at GCSE.

7-9 in GCSE Chemistry.

Qualification details:

AQA AS/A2 Chemistry

Specification code: 7404 7405

QAN code: AS: 601/5730/6; A-level: 601/5731/8

Qualification details:

AQA AS/A2 Chemistry

Specification code: 7404 7405

QAN code: AS: 601/5730/6; A-level: 601/5731/8

What is expected of you:

You will be expected to attend all lessons and complete all tasks on time. There is a section on chemical calculations which will require a basic competency in Maths. You will need to cope with the pressure of homework set most lessons and two sets of module exams per year.

What it prepares you for:

Higher Education

- Veterinary science
- Medicine
- Engineering
- Biological Sciences
- Pharmacy
- Materials Science
- Dentistry
- Chemistry

Careers

- Doctor
- Veterinary Surgeon
- Chemical Engineer
- Forensic Scientist
- Pharmacist
- Dentist
- Cancer Researcher
- Commercial Chemist
- Research Chemist

A Level Chemistry - Year 1

These topics build upon work covered in year 11 and include:

- The structure of atoms and how atoms join together into larger structures.
- Energy changes in chemical reactions and the practical results of reversible reactions including equilibria.
- A study of the elements in groups 2 and 7 of the Periodic Table and how the chemical and physical properties of these elements change within their Groups.
- The structures and chemical reactions of simple organic (carbon) compounds including hydrocarbons and alcohols.
- Quantitative chemistry. Including calculating the masses or volumes of substances produced in chemical reactions.

A Level Chemistry – Year 2

The topics covered in year 2 are more demanding and build upon areas covered in year 1. Topics include:

- Reaction kinetics, which involves the equations governing the speeds of chemical reactions.
- Factors affecting equilibria and how these are taken into account in the chemical industry.
- Acids and bases.
- The structures and reactions of some more complicated organic (carbon) compounds including aldehydes, ketones, carboxylic acids, benzene and other aromatic compounds.
- Electrical chemistry.
- The chemistry of the transition metals, including their reactions, colours and uses.
- Aspects of biochemistry aimed at helping students wishing to pursue careers in medicine and biosciences.

For more information:

If you are an internal applicant, please talk to your chemistry teacher about the possibility of studying chemistry in the Sixth Form. Or you may choose to talk to Mrs K Weston (Senior Lead: Science)

If you are an external applicant and would like more details about this course please email sixthform@mosslands.wirral.sch.uk



COMPUTER SCIENCE



About the course:

“At its heart lies the notion of computational thinking: a mode of thought that goes well beyond software and hardware, and that provides a framework within which to reason about systems and problems.” (CAS-Computer Science a Curriculum for Schools)

Computer Science will encourage you to be inspired, motivated and challenged by following a broad, practical, satisfying and worthwhile course of study. It will provide insight into, and experience of how computer science works, stimulating your curiosity and encouraging you to engage with computer science in your everyday life as well as to make informed choices about further study or future career choices.

You will develop an ability to analyse, critically evaluate and make decisions. The approach used to help you deliver your final project is a vital component of ‘post-school’ life and is of particular relevance to Further Education, Higher Education and the workplace.

Entry Requirements:

- 5 GCSEs at grade 4 or above (incl. English & Mathematics)
- Grade 4 or above in GCSE Computer Science

Qualification details:

(OCR) A Level GCE Computer Science - 601/4911/5

What is expected of you:

To create an environment which helps you to have the best chance of success we expect all learners to:

- Attend regularly and be punctual
- Behave responsibly and safely at all times
- Contribute to creating a pleasant learning environment
- Abide by the Computer Use Policy
- Meet set deadlines for work



What it prepares you for:

Computer Science is a practical subject where students can apply the academic principles learned in the classroom to real-world systems. It is an intensely creative subject that combines invention and excitement, and can look at the natural world through a digital prism.

The aims of this qualification are to enable you to develop:

- An understanding and ability to apply the fundamental principles and concepts of computer science, including: abstraction, decomposition, logic, algorithms and data representation.
- The ability to analyse problems in computational terms through practical experience of solving such problems, including writing programs to do so.
- The capacity to think creatively, innovatively, analytically, logically and critically.
- The capacity to see relationships between different aspects of computer science.
- Mathematical skills.
- The ability to articulate the individual (moral), social (ethical), legal and cultural opportunities and risks of digital technology.

This A-Level qualification carries UCAS points and is recognised by higher education providers as contributing to meeting admission requirements for many Computing/ICT-related courses if taken alongside other qualifications, as part of a two-year programme of learning.

What does this qualification cover?

The following topics are covered:

Unit 1

- The characteristics of contemporary processors, input, output and storage devices
- Software and software development
- Exchanging data
- Data types, data structures and algorithms
- Legal, moral, cultural and ethical issues

Unit 2

- Elements of computational thinking
- Problem solving and programming
- Algorithms to solve problems and standard algorithms

How will it be assessed:

You are assessed by sitting 2 x 150 minute external exams, each worth 40% of your final grade.

You are also required to produce a programming project of your choice which meets the A-Level standard for complexity. The final project is worth 20% of the final grade.

For more information:

If you are an internal applicant, please talk to your computer science teacher about the possibility of studying computer science in the Sixth Form. Or you may choose to talk to Mr Mckune (Subject Lead: Computer Science)

If you are an external applicant and would like more details about this course please email sixthform@mosslands.wirral.sch.uk

DIGITAL MEDIA

About the course:

This qualification is designed for learners 16 years old or over who want to study digital media concept and product development. The qualification is designed to be taken as part of a study programme alongside other vocational qualifications or A Levels, such as in Business, English, Art and Design, or Performing Arts.



Entry Requirements:

Learners are most likely to succeed if they have:

- 5 GCSEs at grades 4 or above and/or
- BTEC/CTEC qualification(s) at Level 2
- Achievement in English and Mathematics through GCSE or Functional Skills.

Qualification details:

OCR Level 3 Cambridge Technical Extended Certificate in Digital Media - 601/7259/9

What is expected of you:

You will need to be hardworking, well-organised and self-motivated in order to be successful. You will also need a good level of ICT and communication skills. The course also requires you to be an independent learner, and you will need to ensure you are responsible for your own learning. This means you will need to be fully aware of what is required from all work set in terms of outcomes. You will be given regular feedback, which will allow you to monitor your own progress.

What it prepares you for:

This qualification will provide learners with the opportunity through applied learning to develop the core specialist knowledge, skills and understanding required in the digital media sector.

The qualification carries UCAS points and is recognised by higher education providers as contributing to meeting admission requirements for many courses if taken alongside other qualifications as part of a two-year programme of learning.

It will support entry to many higher education courses, depending on the other qualifications learners have taken. Learners should always check the entry requirements for degree programmes at specific higher education providers.

The qualification can also support progression to employment directly, or via an apprenticeship.

How will it be assessed:

The units are graded Pass, Merit and Distinction.

The overall qualification is graded Pass, Merit, Distinction, Distinction *

For this qualifications, a learner must complete a minimum of 180 GLH. They must achieve the two mandatory units totaling 150 GLH and one optional unit totaling a minimum of 30 GLH.

Key to units for this qualification:

M = Mandatory | O = Optional | E = External assessment | I = Internal assessment

UNIT NO.	UNIT TITLE	UNIT REF. NO. (URN)	HOW ARE THEY ASSESSED?	GUIDED LEARNING HOURS (GLH)	MANDATORY OR OPTIONAL
1	Media products and audiences	R/507/6387	E	90	M
2	Pre-production and planning	Y/507/6388	E	90	O
3	Create a media product	D/507/6389	I	60	M
6	Social media and globalisation	D/507/6392	E	60	O
7	Journalism and the news industry	H/507/6393	I	60	O
16	The creation and use of sound in media	A/507/6402	I	60	O
20	Advertising media	R/507/6402	I	60	O
21	Plan and deliver a pitch for a media product	Y/507/6407	I	30	O
22	Scripting for media products	D/507/6408	I	30	O
23	Create a personal media profile	H/507/6409	I	30	O
24	Cross media industry awareness	Y/507/6410	I	30	O

To achieve this qualification, there's mandatory content that all learners must have successfully mastered. This content is shown in the table above by an **M**, and it contributes 83% to the qualification grade.

For more information:

If you are an internal applicant, please talk to your business studies teacher about the possibility of studying Digital Media in the Sixth Form. Or you may choose to talk to Mr Inman (Senior Lead: Vocational)

If you are an external applicant and would like more details about this course, please email sixthform@mosslands.wirral.sch.uk

DRAMA



About the course:

This exciting Drama course allows you to develop your performance skills and provides you with varied opportunities to perform in front of an audience. You will learn about different performance styles, practitioners and theatre movements, exploring ideas and concepts practically and creatively. You will gain a knowledge and understanding of theatre practice through your work as an actor, a deviser and a director.

Entry requirements:

- At least five GCSEs at grades 5-9
- Level 2 Merit or above in BTEC Performing Arts: Drama or GCSE Drama grade 6 – 9.

Qualification details:

BTEC Nationals Performing Arts DRAMA NQF Level 3 Extended Certificate.

<https://qualifications.pearson.com/en/qualifications/btec-nationals/performing-arts-2016.html>

What is expected of you:

We require your energy, enthusiasm and passion for Drama. You must be willing to push yourself out of your comfort zone and explore a variety of performance styles.

As a practical subject, you are required to take part in weekly practical workshops, which are regularly filmed for your evidence portfolio.

You must be willing to perform in both lessons and performances with audiences.

You will need to plan your time effectively. You will be expected to rehearse outside of lesson time and attend theatre trips. You will need to organise group meetings and use your independent study time to research and complete Actor's Logs and portfolio documents.

As a Drama student, you must be able to work well with others; group work is an essential element of the course.

What it prepares you for:

This course will provide you with the skills and experience that you will need to work in the Performing Arts industry.

You can continue studying Drama, Acting and The Performing Arts at a higher level; both higher BTEC qualifications and degrees.

How will I be assessed?

You have **2 Units** to complete in the first year, each focusing on a **range of practical Drama skills**. The emphasis of the BTEC course is on practical work and your tutor will continually assess performance pieces.

Unit 1 – Investigating Practitioner’s Work (external exam)

- You will practically explore a range of theatre practitioners, experimenting with their performance styles and learning about the impact on theatre that they have made. This also forms the basis of Unit 2.
- For the final exam, the exam board will provide a theme in which you have to relate 2 practitioners to. You have 4 weeks to prepare for the extended writing task and to prepare your examination research notes. You will then complete your prepared essay in examination conditions.

Unit 2 – Developing Skills & Techniques for Live Performance (Practical coursework)

- You will develop your performance skills as an actor and director, performing in both scripted and devised practical work. You will take part in a range of Drama workshops exploring contrasting performance styles and acting methods. You will perform and be assessed in 2 contrasting performances to an audience.
- You will need to provide evidence of your learning and development. This is a combination of actor’s log, portfolio research and filmed workshop and rehearsal footage. The process of your final performance is of equal importance to your final showcase piece.

For more information:

If you are an internal applicant, please talk to Mrs Brett about the possibility of studying Drama in the Sixth Form.

If you are an external applicant and would like more details about this course please email sixthform@mosslands.wirral.sch.uk



ENGLISH LANGUAGE & LITERATURE

About the course:

This course is designed with a focus on the integration of language and literature, the course enables students to see how linguistic and literary methods are related and explore these links in their work. Students will engage creatively and independently with a variety of spoken, written and multi modal texts.



Entry requirements:

You will need to have Grades 5-9 in the new GCSEs in order to undertake a course at this level. It is an academically demanding course and you will need to have secured a good pass at GCSE in either English Language or English Literature and ideally in both. Additionally, we would welcome students who have enjoyed studying English at Mosslands, who have an interest in Literature and read widely, and who would like to develop their creative writing skills at a higher level.

What is expected of you:

This specification offers opportunities for students to develop their subject expertise by engaging critically, creatively and independently with a wide range of texts. Students will analyse literary and non-literary texts in a range of modes and genres. Students will develop skills as producers and interpreters of language by creating texts themselves and critically reflecting on their own processes of production. The key areas of learning are: the representation of place, point of view, functions of the poetic voice, the role of the individual in society, conflict in drama and creative transformations.

What it prepares you for:

Higher Education

The skills of critical analysis, interpretation and evaluation that you acquire studying A level English are attractive skills needed at university for a wide range of courses. Degree courses in English are extremely popular and many students take advantage of the opportunity to study English Language or Literature as single honours or in combination with other subjects such as; history, psychology, modern languages, law, journalism, film and media studies, and sociology.

Careers

The course would be good preparation for careers in law, journalism, the media, speech therapy, teaching, publishing, writing, librarian, marketing and public relations. However this list is not exhaustive there are numerous other fields in which strong communication and written English skills are key priorities.

How will it be assessed:

Paper 1: Telling Stories (40% of A Level)

- Remembered Places – the representation of place
- Imagined Worlds – point of view and genre in prose
- Poetic Voices – the forms and functions of poetic voice
- Methods of language analysis are integrated into the activities.

Assessed

Written Exam 3 Hours

100 marks

Paper 2: Exploring Conflict (40% of A Level)

- Writing about society – the role of the individual in society, recreative tasks based on set texts
- Critical commentary evaluating own writing
- Dramatic encounters – conflict in drama
- Methods of language analysis are integrated into the activities.

Assessed

Written Exam 3 Hours

100 marks

40% of A Level

Non Exam Assessment (Coursework 20% of A Level)

- Making connections, an investigation on a chosen theme and text
- Methods of language analysis are integrated into the activities.

Assessed

Assessed by teacher and Moderated by AQA

50 marks

Task: A personal investigation that explores a specific technique or theme in both literary and non- literary discourse (2,500 to 3,000 words).

For more information:

If you are an internal applicant, please talk to your English teacher about the possibility of studying English in the Sixth Form. Alternatively, you may choose to talk to the subject leader Miss J. Adley.

If you are an external applicant and would like more details about this course please email sixthform@mosslands.wirral.sch.uk



ENVIRONMENTAL SCIENCE

About the course:

Environmental Science is about understanding the complex interactions between humans and the environment. It combines elements of biology, chemistry, physics, and geography to explore how ecosystems function and how human activities impact our planet. This fascinating subject allows you to investigate real-world environmental challenges and develop solutions for a sustainable future. A-level Environmental Science is a dynamic course where you'll learn through a combination of practical fieldwork, laboratory experiments, and theoretical study. You'll develop critical thinking skills, learn to analyse scientific data, and understand how to evaluate environmental issues from multiple perspectives. This subject complements many other A-levels, particularly Biology, Chemistry, Geography, and Economics, as it provides a broader context for many of the concepts covered in these subjects.

You will use various scientific equipment and techniques, from water testing kits to geographical information systems (GIS). You'll also develop your research and analytical skills, learning to interpret scientific literature and data to draw evidence-based conclusions about environmental issues.

Entry requirements:

There are no specific requirements to access the course. However, learners are most likely to succeed if they have:

- 5 GCSEs at grades 5 or above and/or
- BTEC qualification(s) at Level 2
- Achievement in English and Mathematics at GCSE.

What is expected of you:

- Dedication to both theoretical learning and practical work
- Willingness to participate in fieldwork and outdoor activities
- Good time management
- Active participation in class discussions and group work
- Keeping up-to-date with current environmental issues and scientific developments

What it prepares you for:

- Environmental Consultant • Conservation Officer • Sustainability Manager • Environmental Engineer • Marine Biologist • Climate Change Analyst • Environmental Education Officer • Renewable Energy Developer • Environmental Policy Advisor • Waste Management Officer

Degrees in:

- Environmental Science • Ecology • Conservation Biology • Sustainable Development • Environmental Management • Geography • Earth Science



How will it be assessed: Paper 1

What's assessed:

- The living environment
- Biological resources
- Sustainability
- Research methods

Students will be expected to draw on knowledge and understanding of the entire course of study to show a deeper understanding of the interconnections between topics.

- Written exam: 3 hours
- 120 marks
- 50% of A-level

A combination of multiple choice, short answer and extended writing questions.

How will it be assessed: Paper 2

What's assessed:

- The physical environment
- Energy resources
- Pollution
- Research Methods

Students will be expected to draw on knowledge and understanding of the entire course of study to show a deeper understanding of the interconnections between topics.

- Written exam: 3 hours
- 120 marks
- 50% of A-level

A combination of multiple choice, short answer and extended writing questions.

For more information:

If you are an internal applicant, please talk to your Geography teacher about the possibility of studying Environmental Science in the Sixth Form. Alternatively, you may choose to talk to the subject leader Miss K Jones.

If you are an external applicant and would like more details about this course please email sixthform@mosslands.wirral.sch.uk



ESPORTS

About the course:

Esports is defined as organised competitive gaming, which is human versus human, either as individuals or in teams. The esports industry is a fast-growing global industry. In February 2019, Newzoo published its 2019 Global Esports Market Report. This stated that, in 2018, the global esports market was valued at U.S. \$655 million. This rose to nearly U.S. \$865 million in 2019 and is projected to reach U.S. \$1.79 billion in 2022. This suite of qualifications has been developed to meet this upcoming demand for skills in esports. The qualifications include a breadth of transferable skills that enable learners to experience different areas of esports to aid their progression to employment, either directly or via further study. Esports offers a unique opportunity to study a sector that crosses over multiple subject areas such as sport, marketing, enterprise, IT and the creatives. It provides an opportunity for alignment of social, physical, mental and financial skills into one qualification to deepen and expand learning. These are skills that are highly valued in the changing and fluid workplace. Learners must apply strategy, skill and teamwork to be successful.

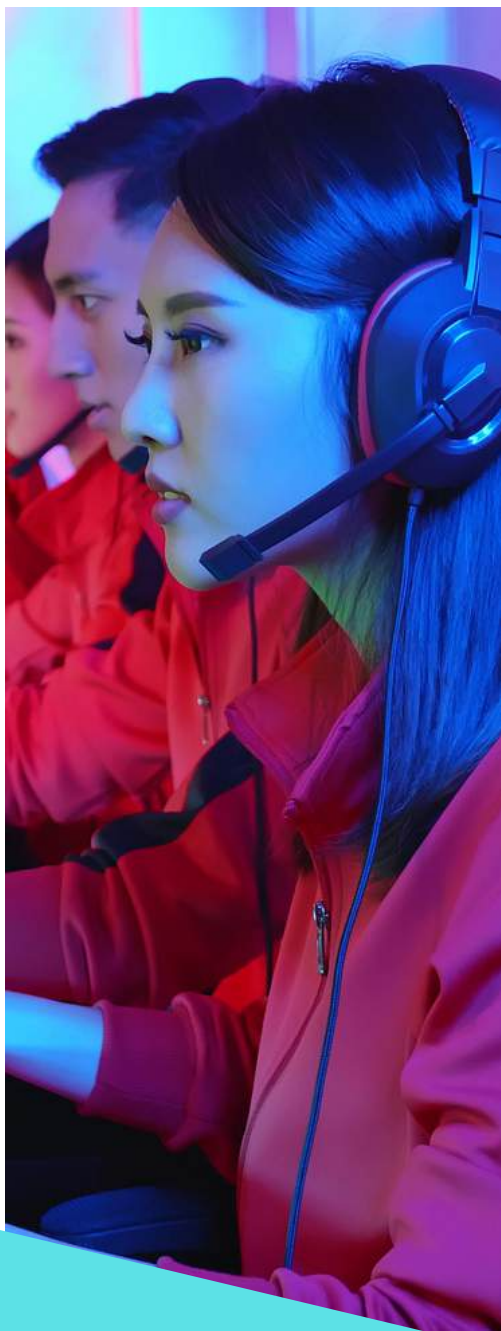
What does this qualification cover?:

The content of this qualification has been developed in consultation with key stakeholders. This ensures that the content is appropriate and consistent with current industry practice to enable learners to enter employment. Higher education institutions have been consulted to ensure that the qualification allows appropriate progression for those aspiring to higher-level study. This is a career-focused qualification with industry endorsement that enables learners to learn underpinning knowledge, develop technical and transferable skills, and gain experience in a variety of different sections of the esports industry.

Learners taking this qualification will study four mandatory units:

- Unit 1: Introduction to Esports
- Unit 2: Esports Skills, Strategies and Analysis
- Unit 3: Enterprise and Entrepreneurship in the Esports Industry
- Unit 4: Health, Wellbeing and Fitness for Esports Players

Pearson BTEC Level 3 Nationals in Esports – Specification – Issue 3 – May 2021 © Pearson Education Limited 2021 11 The mandatory content allows learners to develop their technical skills across the different unit areas, supported by underpinning knowledge, and provides the opportunity for learners to relate these to the esports industry. Learners will also be able to choose four optional units up to a total of 240 GLH. The optional units can focus on an area in which the learner wants to specialise, such as sport (e.g. covering coaching, nutrition and psychology), or they can extend the breadth of knowledge and skills across a range of areas within esports.



Entry requirements:

5 GCSE at grade 4 and above including Maths and English.

What is expected of you:

To create an environment which helps you to have the best chance of success we expect all learners to:

- Attend regularly and be punctual
- Behave responsibly and safely at all times
- Contribute to creating a pleasant learning environment
- Abide by the Computer Use Policy
- Meet set deadlines for work

Possible career options:

The primary focus of the Pearson BTEC Level 3 National Diploma in Esports is on progressing to employment across a range of roles within esports. Jobs that are available in these areas include:

- Esports player
- Team coach
- Events organiser
- Shoutcaster and presenter
- Social media influencer
- Video production editor
- Data analyst.

The qualification attracts UCAS Tariff points and is recognised by higher education providers as contributing to entry requirements for many related courses. When taken in a two-year, full-time study programme with other qualifications, such as an A Level in Business or Media or a relevant Pearson BTEC Level 3 National Extended Certificate, learners can progress to higher-education degree programmes, such as a BA (Hons) in Events Management, a BA (Hons) in Media or a BA (Hons) in Esports, as well as accessing Higher Nationals directly from the qualification. Learners should check entry requirements for degree and HND programmes with providers.

How your work is assessed:

100% coursework and you have to meet all the criteria from each of the assignments.

For more information:

If you are an internal applicant, please talk to Mr Inman about the possibility of studying Esports in the Sixth Form.

If you are an external applicant and would like more details about this course please email sixthform@mosslands.wirral.sch.uk



FINE ART

About the course:

Are you creative and imaginative? Do you enjoy exploring ideas and looking at things in different ways? If so, you should consider a course in Fine Art. Fine Art is about looking, learning, thinking and communicating. You will enjoy developing your understanding of the visual world, learning practical skills and responding to ideas and issues in ways that are personal to you.

Fine art offers opportunities to use your creativity to express yourself. You will develop your understanding of creative processes, your ability to observe and to think, to solve problems and to communicate in a visual way. It will enable you to work independently and to make your own discoveries by exploring ideas, other artists' work and different materials and techniques. Fine Art gives you the skills and knowledge to create personal and imaginative work. If you have an adventurous, creative and enquiring mind and are excited by shaping and determining the visual world around us, there is an opportunity waiting for you.

You will be introduced to a variety of experiences that explore a range of fine art media, processes and techniques. You will explore the use of drawing for different purposes, using a variety of methods and media on a variety of scales. You will use sketchbooks/workbooks/journals to document your work where appropriate.

You will explore relevant images, artefacts and resources relating to a range of art, from the past and from recent times. This should be integral to the investigating and making processes. Your responses to these examples must be shown through practical and critical activities that demonstrate your understanding of different styles, genres and traditions.

What does this qualification cover?:

Art and Design (Fine Art) covers a broad and developing area of study that includes painting, drawing, ceramics, sculpture, installation, and conceptual art and aspects of print-making, photography and film.

Course Content:

• Drawing • Painting • Mixed-media (including collage and assemblage) • Sculpture • Ceramics • Installation • Printmaking • Moving image (animation, film and video)

Entry requirements:

A strong KS4 portfolio and at least a 4 at GCSE/Level 2 qualification.

N.B Students may find this course challenging if they achieve less than a 4 at GCSE / Level 2



What is expected of you:

Students are required to work in one or more area(s) of Fine art, such as those listed Below. They may explore overlapping areas and combinations of areas:

• Drawing and painting • Mixed-media, including collage and assemblage • Sculpture • Ceramics • Installation • Printmaking (relief, intaglio, screen processes and lithography)

Students will be required to demonstrate skills in all of the following:

- Appreciation of different approaches to recording images, such as observation, analysis, expression and imagination
- Awareness of intended audience or purpose for their chosen area(s) of fine art
- Understanding of the conventions of figurative/representational and abstract/non-representational imagery or genres
- Appreciation of different ways of working, such as, using underpainting, glazing, wash and impasto; modelling, carving, casting, constructing, assembling and welding; etching engraving, dry point, mono printing, lino printing and screen printing
- Understanding of pictorial space, composition, rhythm, scale and structure
- Appreciation of colour, line, tone, texture, shape and form

Students should be prepared to work hard: in study periods, lessons and outside of school for example taking photographs, gathering materials, completing class studies- in essence, students need a passion for the subject in order to make good progress! Adherence to deadlines is essential for prompt feedback. Students should be prepared to listen and to act upon the advice from all teachers in addition to contributing to critique sessions actively.

Possible career options:

• Architect • Art technician • Art therapist • Art valuer • Artist in residence • Arts administrator • Community arts worker • Illustrator • Lecturer • Multimedia artist • Mural artist • Museum/gallery curator • Painter • Printmaker • Sculptor • Teacher • Ceramics • Graphic Designer • Game design • Visual effects for film and television

Alongside the practical expertise you'll develop in your studies, you'll also learn transferable skills valued in both higher education and the world of work:

• analytical thinking • creative problem solving • working independently • research methods • understanding how context shape meaning • how to communicate effectively.

The analytical and creative problem-solving elements of the course will support you in a range of subjects from History, English, Business or film studies through to Biology, Chemistry, Physics and Maths. Art and design also teaches you how to learn from your experiences and work independently – skills valued by employers and higher education institutions alike.

How your work is assessed:

Fine Art A-level assessment: For component 1, you will develop work for a personal investigation into an idea, issue, concept or theme supported by written material. This will count for 60% of your total A level marks. In component 2 you will produce personal work in response to one of eight exciting starting points which will count for 40% of your total A-level marks.

For more information:

If you are an internal applicant, please talk to your art teacher about the possibility of studying Art in the sixth form. Or you may choose to talk to Mrs C Waddilove (Subject Lead:Art)

If you are an external applicant and would like more details about this course please email sixthform@mosslands.wirral.sch.uk



GEOGRAPHY

About the course:

The Edexcel A Level geography course provides students with a qualification that is engaging and relevant to today's geographers – a qualification that enables students to engage critically with real world issues and places, apply their own geographical knowledge, understanding and skills to make sense of the world around them, and to help prepare them to succeed in their chosen pathway.

Entry Requirements:

- At least five GCSEs at grades 5-9.
- Students who wish to take A Level geography you need to achieve a minimum of grade 5 at GCSE.

Qualification details:

This is an A Level qualification, further details can be found on the link below;

<https://qualifications.pearson.com/en/qualifications/edexcel-a-levels/geography-2016.html>

What is expected of you:

You will be expected to attend all lessons and meet deadlines set. You will need to have a strong interest in geography and be able to cope with a rigorous and demanding course.

What it prepares you for:

According to the Royal Geographical Society, Geography graduates have some of the highest rates of graduate employment.

Geography will help you develop your communication and teamwork skills, as you'll often work on group projects. You'll also develop your research and analysis skills including in IT, lab and fieldwork, which means you will be able to collect and look for patterns in data.

Employers love the mix of technical and social skills people get from studying geography, which they see as very transferable i.e. useful for a whole range of jobs.

Geography is great for any kind of career that involves the environment, planning, or collecting and interpreting data. Popular careers for people with geography qualifications include: town or transport planning, surveying, conservation, sustainability, waste and water management, environmental planning, tourism, and weather forecasting.

The army, police, government, research organisations, law and business world also love the practical research skills that geographers develop.

Because geographers learn about human and population development, geography can be useful for jobs in charity and international relations too.



What does this qualification cover and how will you be assessed?

The Pearson Edexcel Level 3 Advanced GCE in Geography consists of;

- three externally examined papers and
- one non-examination assessment component.

Dynamic Landscapes

Topic 1: Tectonic Processes and Hazards - Tectonic processes, a study of the causes of tectonic hazards, the impact of tectonic activity on people, and responses to tectonic hazards.

Topic 2: Landscape Systems, Processes and Change - An integrated study of processes, Landforms and landscapes. A study of one landscape system and the physical and human processes influencing change over time and space.

Choose one from:

- Option 2a: Glacial Landscapes and Change
- Option 2b: Coastal Landscapes and Change

Dynamic Places

Topic 3: Globalisation - A study of globalisation, its causes and consequences for different people and places.

Topic 4: Shaping Places - A study of how and why places are shaped and changed, the meanings and identities attached to different places and the consequences for different people.

Choose one from:

- Option 4a: Regenerating Places
- Option 4b: Diverse Places

Physical Systems and Sustainability

Topic 5: The Water Cycle and Water Insecurity - Water cycle, human and natural factors that impact on water cycling, consequences for water security and future water conflicts.

Topic 6: The Carbon Cycle and Energy Security - Carbon cycle, human and natural factors impacting on carbon cycling, the consequences for ecosystems and management strategies.

Human Systems and Geopolitics

Topic 7: Superpowers - Superpowers, the reasons for shifting economic and political power, the impacts of superpowers, influence of superpowers in governing the global commons.

Topic 8: Global Development and Connections

Choose one from:

- Option 8a: Health, Human Rights and Intervention
- Option 8b: Migration, Identity and Sovereignty

Human Systems and Geopolitics

Topic 7: Superpowers - Superpowers, the reasons for shifting economic and political power, the impacts of superpowers, influence of superpowers in governing the global commons.

Topic 8: Global Development and Connections

Choose one from:

- Option 8a: Health, Human Rights and Intervention
- Option 8b: Migration, Identity and Sovereignty

Paper 1	Written Exam 2 HRS 15 MINS	30%	105 Marks
Paper 2	Written Exam 2 HRS 15 MINS	30%	105 Marks
Paper 3	Written Exam 2 HRS 15 MINS	20%	70 Marks
Independent Investigation	Non-exam assessment	20%	70 Marks

For more information:

If you are an internal applicant, please talk to your Geography teacher about the possibility of studying Geography in the sixth form. Or you may choose to talk to Miss K Jones, Subject Lead: Geography.

If you are an external applicant and would like more details about this course please email sixthform@mosslands.wirral.sch.uk

HISTORY



Why study History at A level?

History is about people, their ambitions, actions and responses to events. It is relevant to our lives as it has shaped the world we live in today. It is useful because it develops a range of analytical and communication skills that compliment a wide range of other subject choices from English, MFL, and Social Sciences.

Top universities, in all subject areas, like students who have undergone the academic training provided by A Level History.

Year 12:

Unit 1: British Period Study and Enquiry - Britain 1930 - 1997

Unit 2: Non-British Period Study - The Crusades & Crusader States, 1095 - 1192

Year 13:

Unit 3: Thematic Study & Historical Interpretations - Russia and its Rulers, 1855 - 1964

Unit 4: Topic Based Essay - The Cold War, 1943 - 1962

Entry requirements:

We want students who:

- Have enjoyed History at Mosslands.
- Have a real interest and enthusiasm for learning about the past.
- Are good at analysing and interpretation.
- Can communicate their ideas clearly.
- Enjoy independent study.
- Have plenty of determination.

Qualification details:

The A Level achieved at the end of the Year 13 is worth up to 140 UCAS points.

What is expected of you:

You will be expected to attend all lessons and complete all tasks on time.

What is expected of you:

You will be expected to attend all lessons and complete all tasks on time.

What it prepares you for:**Higher Education**

The skills of critical analysis, interpretation, and evaluation you will learn at History A level will be attractive to all universities. When applying for any degree course, a background in History will be recognised as an indication of academic rigour and achievement. Degree courses in History are very popular and many students take advantage of the opportunity to continue studying the subject alone or combined with a new and interesting discipline, such as politics or economics.

Careers

There are many careers specific to History such as archaeology, the heritage industry, curating or even teaching!! At the same time, high proportions of students move from a degree in History to careers in law, accountancy, business management and politics.

How will it be assessed:

Students will complete all three exams at the end of Year 13. The Topic Based Essay will also be completed in Year 13.

For more information:

If you are an internal applicant, please talk to your History teacher about the possibility of studying History in the Sixth Form. Mr Cauldwell, Mr Adair, and Mr White

If you are an external applicant and would like more details about this course please email sixthform@mosslands.wirral.sch.uk



About the course:

The Level 3 Cambridge Technical in IT is a robust new qualification that prepares learners for their choice of University, Level 4 qualifications or employment.

The course is a well-respected qualification and is equivalent to 1 A-Level.

In addition to technical skills and knowledge, IT students will also develop other key abilities such as the ability to communicate clearly at all levels; to plan and to manage a project; Decision making and problem-solving.

Entry Requirements:

You will need to have achieved 5 GCSEs including Maths and English at least grade 4 and a pass grade in IT.

What is expected of you:

- It is important that students are fully prepared for a large workload and they are self-disciplined to be able to meet deadlines.
- The course is designed to encourage independent learning and you will need to ensure you are responsible for your own learning.
- A significant amount of the course will require you to do your own independent research using the internet, and to appropriately present your findings.
- You will need to be fully aware of what is required from each task in terms of outcomes.
- You will be given tracking sheets and feedback which will allow you to monitor and track your own progress.



What it prepares you for:

Successful completion of the course will allow access to undergraduate degree programmes, Level 4 qualifications or employability within the IT sector.

How will it be assessed?

The Level 3 Cambridge Technical is assessed using coursework, internally assessed tasks and formal examinations.

Topics planned for the course commencing 2019

- Fundamentals of IT
- Global Information
- Application Development
- Internet of Everything
- Computer Networks

For more information:

If you are an internal applicant, please talk to your ICT teacher about the possibility of studying ICT in the Sixth Form. Or you may choose to talk to Mr Inman (Senior Lead: Vocational)

If you are an external applicant and would like more details about this course please email sixthform@mosslands.wirral.sch.uk



MATHS

About the course:

Mathematics A-level is taught over 6 lessons a week. Four of these lessons are on Pure Mathematics and the other two are for Mechanics and Statistics.

The aims and objectives of Maths A-level are to enable you to:

- understand mathematics and mathematical processes in a way that promotes confidence, fosters enjoyment and provides a strong foundation for progress to further study
- extend your range of mathematical skills and techniques
- understand coherence and progression in mathematics and how different areas of mathematics are connected
- apply mathematics in other fields of study and be aware of the relevance of mathematics to the world of work and to situations in society in general
- use your mathematical knowledge to make logical and reasoned decisions in solving problems both within pure mathematics and in a variety of contexts, and communicate the mathematical rationale for these decisions clearly

The areas of study are;

Pure Mathematics

- Topic 1 – Proof
- Topic 2 – Algebra and functions
- Topic 3 – Coordinate geometry in the (x, y) plane
- Topic 4 – Sequences and series
- Topic 5 – Trigonometry
- Topic 6 – Exponentials and logarithms
- Topic 7 – Differentiation
- Topic 8 – Integration
- Topic 9 – Numerical methods
- Topic 10 – Vectors

Section A: Statistics

- Topic 1 – Statistical sampling
- Topic 2 – Data presentation and interpretation
- Topic 3 – Probability
- Topic 4 – Statistical distributions
- Topic 5 – Statistical hypothesis testing

Section B: Mechanics

- Topic 6 – Quantities and units in mechanics
- Topic 7 – Kinematics
- Topic 8 – Forces and Newton's laws

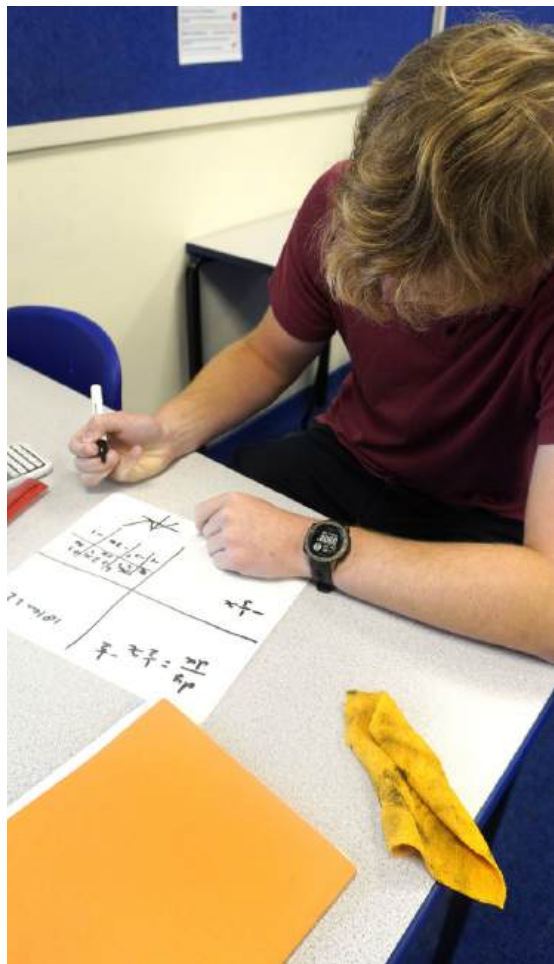
Entry requirements:

A minimum of a Level 7 in 9-1 GCSE Mathematics

Qualification details:

Level 3 A-Level

<https://qualifications.pearson.com/en/qualifications/dexcel-a-levels/mathematics-2017.html>



What is expected of you:

We have the following expectations to help you achieve the best possible grade and to make teaching and learning enjoyable.

We expect you to continue your studies outside of lesson time. You should put in at least 30 minutes extra per 50 minutes lesson of study. This excludes time spend on completing homework. You must do this to strengthen your understanding.

You must complete assigned homework. It is essential to independently assess your own work and understanding. If you are struggling or cannot answer certain questions you must seek help.

You must have at least 90+% attendance. If you are absent you must speak to your teacher and ensure you catch up on your work.

What it prepares you for:

It is a universally highly regarded course, although some employers require or expect other specific qualifications. Others departments will often like to see additional qualifications which balance the skills developed in mathematics.

How will it be assessed?

The Pearson Edexcel Level 3 Advanced GCE in Mathematics consists of three externally-examined papers.

Students will complete all assessment in May/June in Year 13.
Paper 1: Pure Mathematics 1 (*Paper code: 9MA0/01)
Paper 2: Pure Mathematics 2 (*Paper code: 9MA0/02)
Paper 3: Statistics and Mechanics (*Paper code: 9MA0/03)
Each paper is: 2 hours written examination 33.33% of the qualification 100 marks

For more information:

If you are an internal applicant, please talk to your mathematics teacher about the possibility of studying A-level in the Sixth Form.

If you are an external applicant and would like more details about this course please email
sixthform@mosslands.wirral.sch.uk



PHOTOGRAPHY

About the course:

Are you creative and imaginative? Do you enjoy exploring ideas and looking at things in different ways? If so, you should consider a course in photography with EDUQAS. You will enjoy developing your understanding of the visual world, learning practical skills and responding to ideas and issues in ways that are personal to you.

Photography is about looking, learning, thinking and communicating ideas. It inspires creative thinkers. Photography means 'drawing with light' and that is what photographers do when they take a picture. Many photographers have explored various techniques to create images that make a personal statement about things that have interested or concerned them. The most exciting aspect of photography is that you are capturing the world as you see it.

A-level Photography is a practical course in which you learn by doing, so you will be able to create imaginative personal work. You will find out about a whole range of techniques and processes. You will develop your creativity and independent thought, learn to express yourself visually and let your imagination flourish. Photography is a great companion to all other subjects as creativity, imagination and problem-solving skills, can give you great ideas for your other subjects.

You will create your own websites to underpin your work where appropriate. You may wish to develop your drawing skills in order to produce storyboards, thumbnail sketches and/or diagrams, to plan, describe and communicate ideas. You will use apps like Canva and Photoshop, to edit your images to create a personal response to research and briefs.

Entry Requirements:

You do not need any previous knowledge, or access to a digital camera/ iPad/ Phone. This will be supplied for you.

There are no specific requirements to access the course. However, learners are most likely to succeed if they have:

- 5 GCSEs at grades 4 or above and/or
- BTEC qualification(s) at Level 2
- Achievement in English and Mathematics at GCSE.

Qualification details:

EDUQAS A-Level Art and Design – Photography Specification

How will it be assessed:

A-level assessment for component 1, you will develop work for a personal investigation into an idea, issue, concept or theme supported by written material. This will count for 60% of your total A-level marks. In component 2 you will produce personal work in response to one of eight exciting starting points which will count for 40% of your total A-level marks.

You must show knowledge and understanding of:

- relevant materials, processes, technologies and resources
- How ideas, feelings and meanings can be conveyed and interpreted in images and artefacts created in their chosen area(s) of photography,
- Historical and contemporary developments and different styles and genres
- How images and artefacts relate to social, environmental, cultural and/or ethical contexts, and to the time and place in which they were created
- Continuity and change in different styles, genres and traditions relevant to photography,
- A working vocabulary and specialist terminology that is relevant to their chosen area(s) of photography



Skills and Techniques:

You will be expected to demonstrate skills, in the context of your chosen area(s) of photography. You will be required to demonstrate skills in all of the following:

- The ability to explore elements of visual language, line, form, colour, pattern and texture in the context of photography
- Awareness of intended audience or purpose for their chosen area(s) of photography
- The ability to respond to an issue, theme, concept or idea, or work to a brief or answer a need in photography
- Appreciation of viewpoint, composition, aperture, depth of field, shutter speed and movement
- Appropriate use of the camera, film, lenses, filters and lighting for work in their chosen area(s) of photography
- Understanding of techniques related to the production of photographic images and, where appropriate, presentation and layout.

What is expected of you:

- You should be prepared to work hard: in study periods, lessons and outside of school for example taking photographs, gathering materials, completing class studies– in essence, students need a passion for the subject in order to make good progress!
- Adherence to deadlines is essential for prompt feedback.
- You should be prepared to listen and to act upon the advice from all teachers in addition to contributing to critique sessions actively.

What it prepares you for:

Possible future options:

• Animation • Commercial photography • Creative and editorial photography • Digital media • Fashion photography • Film and television • Film and visual culture • Forensic photography • Graphics with photography • Medical photography • Visual communication
Studying a photography related degree at university will give you all sorts of exciting career opportunities, including: • Commercial photographer • Fashion photographer • Filmmaker • Fine art photographer • Forensic photographer • Industrial photographer • Medical photographer • Nature photographer • Photographic illustrator • Photographic technician • Teacher • Photojournalist • Picture editor • Researcher • Social photographer • Sports photographer

What does this qualification cover?

You are required to work in **one or more** area(s) of photography, such as those listed below. You may explore overlapping areas and combinations of areas:

- Portraiture/ photographing people
- landscape photography (working from the urban, rural and/or coastal environment)
- still life photography (working from objects or from the natural world)
- documentary photography, photojournalism
- fashion photography
- experimental imagery
- multimedia
- photographic installation
- moving image (video, film, animation)

For more information:

If you are an internal or external applicant and would like more details about this course please email sixthform@mosslands.wirral.sch.uk or speak to Miss Waddilove

PHYSICS

About the course:

These specifications have been developed for students who wish to continue with a study of Physics after GCSE. Some students may wish to follow a physics course for only one year as an AS GCE, in order to broaden their curriculum. Others will continue their course to Advanced GCE. Such a course will prepare students to progress into further education, to follow courses in physics, engineering, one of the other sciences or related subjects, or to enter employment where a knowledge of physics would be useful.



Entry requirements:

- At least five GCSEs at grades 5-9 including 6 or above in GCSE physics or 6-6 in Combined Science
- Students who wish to take A-Level Physics need to achieve grade 6 minimum in GCSE Maths

Qualification details:

OCR A Level Physics

Specification code: Physics A - H156, H556

What is expected of you:

You will be expected to attend all lessons and complete all tasks on time. You will need to have a passion for Physics and be able to cope with the pressures of a demanding course. You will also need to enjoy and understand Mathematics to a high standard.

What it prepares you for:

Higher Education

- Physics
- Engineering
- Medicine
- Astronomy
- Architecture

Careers

- Architect
- Vet
- Engineer
- Forensic science
- Radiographer

Topics Covered:

- Module 1 - Development of practical skills in physics
- Module 2 - Foundations of physics
- Module 3 - Forces and motion
- Module 4 - Electrons, waves and photons
- Module 5 - Newtonian world and astrophysics
- Module 6 - Particles and medical physics

Component 01 assesses content from modules 1, 2, 3 and 5.

Component 02 assesses content from modules 1, 2, 4 and 6.

Component 03 assesses content from all modules (1-6)

How will it be assessed?

Paper 1: Modules 1, 2, 3 and 5. Written exam: 2 hours 15 minutes, 100 marks, 37% of A-level

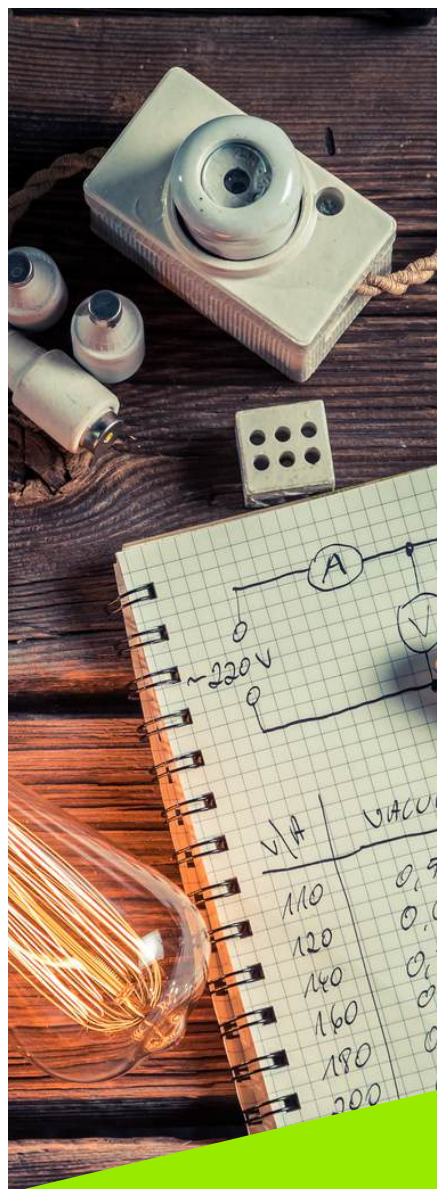
Paper 2: Modules 1, 2, 4 and 6. Written exam 2 hours 15 minutes, 100 marks, 37% of A-level

Paper 3: Modules 1 to 6. Written exam 1 hour 30 minutes, 70 marks, 26% of A-Level

For more information:

If you are an internal applicant, please talk to your science teacher about the possibility of studying A-Level Physics in the Sixth Form. Alternatively, you may choose to talk to Mrs K Weston (Senior Lead Science)

If you are an external applicant and would like more details about this course please email sixthform@mosslands.wirral.sch.uk



PSYCHOLOGY

About the course:

Psychology is an exciting area of study with a growing interest and focus on genetics, cognition, neurology and environmental influences, there has never been a more exciting time to study Psychology.

AS Psychology

- Social influence - looks at conformity, social roles and obedience in society.
- Memory - investigates the way in which we process and retain information, why we forget things and the effect of leading questions.
- Attachment - focuses on the relationship between care givers and those that are cared for.
- Approaches in psychology – looks at the variety of ways in which Psychology can be approached and interpreted.
- Psychopathology - allows students to see what happens when mental health deviates from good, focusing on Schizophrenia.
- Research methods - shows students how Psychologists investigate the world around them.

A2 Psychology

The A level course revisits the topics from AS in greater depth but also includes

- Relationships
- Gender
- Cognition and development
- Schizophrenia
- Eating disorders
- Stress
- Aggression
- Forensic Psychology
- Addiction

Entry requirements:

At least five 5-9 grades at GCSE.

Students who wish to take Psychology at A-level need to achieve at least a 6 in English and Science (Biology) GCSE subjects

What is expected of you:

You will be expected to attend all lessons and complete all tasks on time. You will need to have a passion for the workings of the human mind and be able to cope with the pressures of a demanding course.

What it prepares you for:

Higher Education

- Psychology
- Law
- Sociology
- Education

Careers

- Criminal Psychologist
- Educational Psychologist
- Forensic science
- Counsellor
- Human Resources
- Marketing and Advertising
- Business
- Teaching

For more information:

If you are an internal applicant, please talk to Mrs Sood (Subject Lead: Psychology) about the possibility of studying Psychology in the Sixth Form.

If you are an external applicant and would like more details about this course please email sixthform@mosslands.wirral.sch.uk



PROTECTIVE SERVICES ACADEMY

HOW ABOUT A CAREER IN PROTECTIVE SERVICES?

INTERESTED IN JOINING THE ARMED FORCES, POLICE, AMBULANCE, FIRE, PRISON OR CIVIL SERVICES?

About the course:

This course is designed for individuals seeking an exciting and fulfilling career in the Uniformed Protective Services, such as the police, fire services, armed forces, or in fields like criminology, law or custodial care. With a blend of academic study and hands-on experience, students will develop critical leadership, teamwork, and problem-solving skills. The programme offers a diverse range of specialist units, engaging trips, and visits to emergency services, courts, and military facilities. Graduates are well-equipped for further study or careers in various protective, public services and related sectors.

Entry Requirements:

- 5 GCSEs at grade C/4 or above (including English and Maths)
- Any Level 2 Diploma at Merit level plus grade C/4 or above in English and Maths

*However, if you have not achieved the Maths and/or English, you can still join the course but would have to do these qualifications alongside the Extended Diploma course. All applicants are required to undertake the Protective Services Academy Selection test which will include; a fitness test, leadership/teamwork planning test and an interview.

Qualification Details

BTEC Level 3 Extended Diploma in Public Services 500/7801/X

What is expected of you:

The first thing we are after at the Protective Services Academy is the right individual, this comes in all different forms but the basic requirements would be, commitment, grit, sense of humour and willingness to 'have a go'.

You will be expected to engage in all classroom and practical based activities as well as support the school through completing break and lunchtime duties and support breakfast and after school clubs.

Attendance and Punctuality are of upmost importance, simply put... if you are not in class, taking part in practical based session or attending trips and visits you will not be developing the skills, qualities and knowledge that you require for effective service in the Protective Services.

What does this qualification cover?

The Protective Services Academy differs substantially from BTEC Public Services and military preparation courses offered in many colleges which often fail to effectively prepare individuals holistically for entry into the protective services either through too much focus on the academic qualifications (BTEC qualifications) or a narrow focus on a single protective service (military preparation).

At Protective Services Academy we ensure that upon completion, all recruits are fully prepared for all progression options either academic or employment. We achieve this through the delivery of a bespoke three-part programme...

Education – BTEC Extended Diploma in Public Services, English and Maths (if required)

Health and Fitness – Physical Training, Sports, Mental Resilience Training (MRT), Health and lifestyle education and Adventurous Training

Careers, Employment and Personal Development - Careers and Employment Syllabus, Gold DoFE, First Aid and CPR, Leadership and Initiative Development and UCAS

What it prepares you for:

BTEC Public Services Level 3 qualifications are nationally recognised, so dependent on the programme enrolled on recruits will gain between up to 3 A-Level equivalents meaning that this qualification allows you to gain UCAS points.

It is our goal at the Protective Services Academy to put all our recruits in the unique position of being fully prepared academically, physical and mentally to join the protective services on completion of the programme, or to progress onto employment, apprenticeship or university...

Units	Trips and Visits
Across the two years, you will cover 13 units, seven mandatory and six specialist.	Emergency Services <ul style="list-style-type: none"> • Police Station Visit • Police HQ Visit • Careers presentations with all services • Fire Station Visit • Fire HQ Visit • Marine Rescue Service Visit • Manchester Airport Fire & Rescue Day • Course specific open day at Uni of Chester and Glyndŵr University Visit
Mandatory Units Citizenship and Diversity Behaviour and Discipline in the Uniformed Protective Services Global Affairs, the media, and the Uniformed Protective Services Physical Preparation, Health and Wellbeing Teamwork, Leadership and Communication in the Uniformed Protective Services Government and the Protective Services Planning for and Responding to Emergency Incidents	Armed Forces <ul style="list-style-type: none"> • Careers Day (HMS Eagle) • Careers presentations with all services • Specialist Submariners Service Presentation • Army Barrack Visit • Army Residential Week (4 days)
Specialist Units Skills for Outdoor Activities and the Uniformed Protective Services Expedition Skills Introduction to Criminology Police Powers and the Law Understanding the Third Sector Professional Development in the Uniformed Protective Services	Custodial, Law and Security Careers presentations Visits to Liverpool and Chester Crown Courts Seized Museum, Liverpool (Border Force) Liverpool Airport Visit (Border Force)
	Duke of Edinburgh Practice Expedition (2 nights /3 days) Qualifying Expedition (3 nights /4 days) Plus much more!

For more information:

If you are an internal applicant, please talk to Mr A Power - Protective Services Academy Director or Mrs Sood, Assistant Headteacher - about the possibility of studying this in the sixth form.

If you are an external applicant and would like more details about this course please email sixthform@mosslands.wirral.sch.uk



SPORT & PHYSICAL ACTIVITY

About the course:

CTEC Sports Studies (Extended Certificate/ Diploma/ Extended Diploma)

The CTEC Sports Studies course aims to provide students with the opportunity to develop coaching and sports science experience that will lead on to University sports courses or full time employment in the sports industry.

It will build on CNAT sports studies (students may be able to study sport at KS5 if they did not at KS4) skills. Students will be responsible for recording and evaluating their sports performance and others, coaching all levels of students as a PE teacher and also gaining a knowledge of anatomy and sports injury.

There are **three** routes to choose between:

Extended Certificate: The assessment structure comprises three mandatory units and then a choice of two additional units and is equivalent to 1 A level. If you choose this option you must study two other Level 3 subjects.

Diploma: The assessment structure comprises nine mandatory units and a choice of two additional units, equivalent to 2 A levels. If you choose this option you must study one other Level 3 subject.

Extended Diploma: The assessment structure comprises thirteen mandatory units and a choice of four additional units, equivalent to 3 A levels. This is the only qualification you will study if you choose this option.

Entry Requirements:

Learners are most likely to succeed if they have:

- 5 GCSEs at grades 4 or above and/or
- BTEC or CNAT qualification(s) at Level 2
- Achievement in English and Mathematics at GCSE.

Qualification details:

CTEC Sport & Physical Activity, Level 3

[Sport qualifications summary brochure \(ocr.org.uk\)](https://ocr.org.uk)



What is expected of you:

You will be expected to attend all lessons and complete all tasks on time. You will need to have a passion for sports and be able to cope with the pressures of a demanding course. You should be revising for the exams in your own time. Most of the coursework will be ran through Google classroom and you must keep up to date by working in class and at home. You will be expected to represent the school as a coach/teacher in the community and have a positive attitude. You will also be expected to film and edit your own performance at two sports.

What does this qualification cover?

The content consists of a balance between a number of key areas in Physical Education, providing pupils with options when choosing higher education courses or work based opportunities.

The programme covers the following content areas:

- Body systems (Skeletal, Muscular, Cardiovascular, Respiratory and energy systems)
- Sports coaching
- Sports organisation
- Performance Analysis in sport
- Practical skills in sport

How will it be assessed:

Unit 1: Body Systems - Written examination, 1.5 hours- 90 marks.

Unit 3: Sports organisations- Written examination, 1.5 hours- 90 marks

Unit 4: Working safely in sport- Written examination, 1.5 hours- 90 marks

Unit 21: The business of sport- Written examination, 1.5 hours- 90 marks

All other units are assessed portfolio work including video analysis of sports performance

The mandatory units are:

- Body systems (Exam)
- The business of sport (Exam)
- Sports injuries and rehabilitation (CW)
- Working in active leisure facilities (CW)
- Improving fitness for sport (CW)
- Sport nutrition (CW)
- Practical sports (CW)
- Sports injuries (CW)
- PA for specific groups (CW)
- Organisation of sports events (CW)
- Working safely in sport (CW)
- Performance analysis (CW)
- Working safely in sport (Exam)
- Sports organisation and development (Exam)
- Sports coaching (CW)

What it prepares you for:

Higher Education

- Any sports course
- Physiotherapy
- Teaching and coaching courses

Careers

- Sports coach
- PE teacher
- Physiotherapist
- Sports analyst/therapist

For more information:

If you are an internal applicant, please talk to your PE teacher about the possibility of studying CTEC Sports Studies in the Sixth Form. Alternatively, you may choose to talk to Mr J Metcalfe (Subject Lead).

If you are an external applicant and would like more details about this course please email sixthform@mosslands.wirral.sch.uk



TRAVEL & TOURISM

About the course & Qualification details:

NCFE Level 2 Extended Certificate in Travel and Tourism

Qualification Structure:

- Total Qualification Time (TQT): 540 hours
- Guided Learning Hours (GLH): 360 hours
- Assessment Method: Internally assessed and externally moderated portfolio of evidence

What is expected of you:

To achieve the Extended Certificate, learners must successfully complete both mandatory units and four optional units, culminating in a total of six graded units. The qualification is graded, and learners are required to demonstrate their knowledge, understanding, and skills across all units.

This qualification provides a comprehensive foundation for those seeking to further their education in travel and tourism or embark on a career within the industry.

Entry Requirements:

There are no entry requirements due to it being a level 2 course

What does this qualification cover?

Units:

1. Customer Service in Travel and Tourism
2. The UK Travel and Tourism Industry
3. Travel and Tourism Destinations
4. UK Purpose-Built Visitor Attractions
5. Organising an Event
6. Understanding Specialist Tourism



How will it be assessed:

- **Assessment Method:** Internally assessed and externally moderated portfolio of evidence

What it prepares you for:

Industry-Specific Skills:

- **Customer Service Skills** – Understanding customer needs, handling complaints, and delivering excellent service in a travel and tourism setting.
- **Knowledge of the UK Travel and Tourism Industry** – Insight into how the sector operates, key trends, and the roles available.
- **Understanding of Destinations & Attractions** – Learning about global and UK tourist destinations, cultural sites, and visitor attractions.
- **Travel Agency & Hospitality Operations** – Awareness of how travel agencies, hotels, and airlines function.
- **Event Planning and Organization** – Skills in planning, promoting, and managing travel and tourism events.
- **Tourism Marketing & Promotion** – Understanding how travel and tourism businesses market their services.
- **Workplace Experience** – Practical skills gained through optional work experience in a travel or tourism-related role.

Transferable Skills:

- **Communication & Interpersonal Skills** – Engaging with customers, colleagues, and industry professionals effectively.
- **Problem-Solving & Decision-Making** – Handling customer inquiries, complaints, and unexpected travel disruptions.
- **Research & Analytical Skills** – Gathering and analyzing tourism data, destination trends, and customer preferences.
- **Organizational & Planning Skills** – Managing tasks, events, and logistics in a professional setting.
- **Teamwork & Collaboration** – Working effectively within a team, whether in customer service, event planning, or operations.
- **Adaptability & Cultural Awareness** – Understanding and responding to diverse customer needs in a global industry.

These skills prepare students for entry-level roles in travel agencies, tour operations, hotels, and airlines or for further study at Level 3 in travel and tourism-related qualifications.

For more information:

If you are an internal applicant, please talk to Miss Jones about the possibility of studying Travel and Tourism in the Sixth Form. Alternatively, you may choose to talk to Miss K Jones (Subject Lead).

If you are an external applicant and would like more details about this course please email sixthform@mosslands.wirral.sch.uk



PASTORAL CARE

The Pastoral System

The school and its' staff will make every effort to ensure that you settle into the Sixth Form as quickly and as efficiently as possible.

You will remain within your school house of Faraday, Grenfell or Ruskin and will be in a tutor group with some of your peers from Year 11. If you are new to the school, you will be placed into a House tutor group. Please ask if you have a preference! Your form tutor is your main point of contact. However, you can also speak to Mrs Sood, Mrs Brunton or Miss Carty if you feel you need to. You will meet with your Form Tutor on a regular basis to discuss progress and to ensure you are happy in your studies. In addition, through Enrichment lessons, staff will be able to review progress and address any concerns or issues that you may have. Miss Carty's office is based in the Sixth Form Centre, opposite the Drama Studio. We have an open-door policy, however, if you need to meet with Miss Carty at a specific time, please speak with Mrs Brunton and she will arrange an appointment to suit.

The House System

Pastoral care at The Mosslands School is provided by a house system which has been in place for over a hundred years. Indeed, many ex-pupils retain affection for the house they belonged to long after leaving the school. All students are allocated to one of three houses – Faraday, Grenfell and Ruskin- as are all staff in the school, both teaching and non-teaching. This system provides a smaller, more personal unit within the larger Sixth Form, support and care throughout a student's education and allows a strong emphasis on behaviour, presentation and academic progress. Each house has a dedicated house team that has its own office where students know they can find support if required.

Jayne Brunton

My name is Jayne Brunton and I have worked at The Mosslands School for 11 years and have had many roles during those years. My favourite by far is being part of the Sixth Form Team in a pastoral and administrative role.

I am permanently based in the Sixth Form and I am the first port of call for any issues you may have, and I will do my very best to help and support you.

I look forward to meeting you all in September.



HOW TO APPLY



Current and external students who wish to apply to become a member of The Mosslands School Sixth Form should complete an online form.

If you have any inquiries then please do not hesitate to contact us via email - sixthform@mosslands.wirral.sch.uk

1

Please complete an online application which can be found at: <https://forms.office.com/r/9d36ZMK7fS> or scan the QR Code

2

You will then be invited into Mosslands to discuss your application and options and to be taken on a tour around the school.

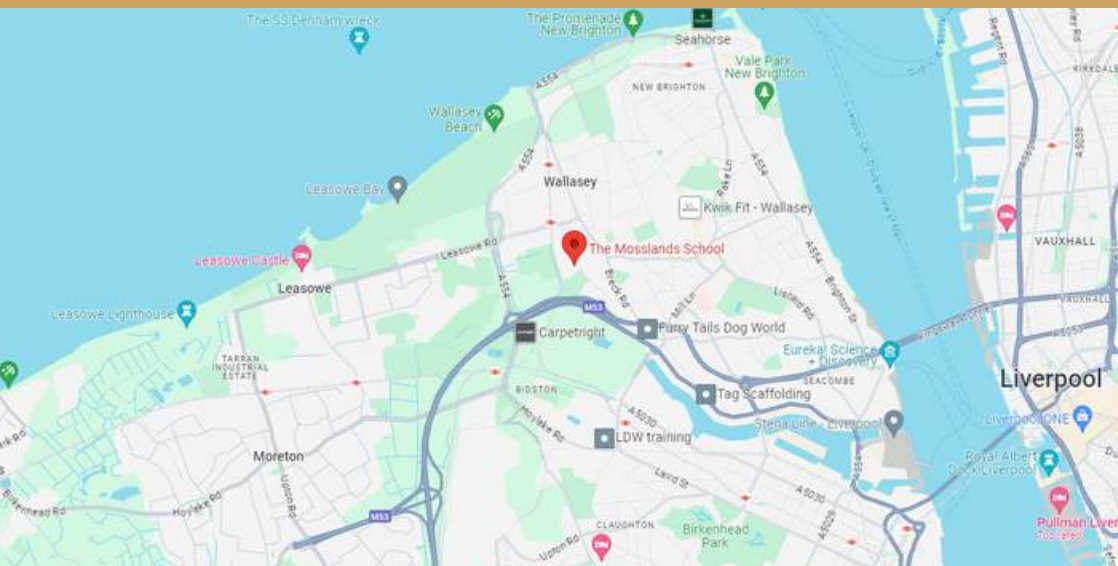
3

Receive your offer and accept your place at Mosslands Sixth Form.



SCAN ME

HOW TO FIND US



Walking to School

Mosslands School is in Wallasey Village, on Mosslands Drive. Many of our students choose to walk to school. The school is easily accessible via roads leading off from Breck Road and from Leasowe Road, near Wallasey Village train station.

Cycling

Many students cycle to school. The school has two cycle parking areas with hoops to which over 100 cycles can be easily secured.

Bus Routes

Buses run during school hours, include the 403 and 413, which provide a 15 minute service and the 409 which runs every half hour.

Trains

Mosslands School is just 0.3 miles from Wallasey Village Station with trains every 15 minutes towards New Brighton and towards Birkenhead.

Car

If you are getting a lift to school please make sure that you are dropped off before the yellow markings and then make your way into the school.

ASSISTANT HEAD OF SIXTH FORM

Mrs Sood

Hi. I have been in Liverpool and at The Mosslands School for the last six years as a teacher and Head of Year 13 for the last four years. I love how friendly Merseyside is as a whole, and how much the people care about their community.

I have been teaching psychology for over twelve years now, which I have thoroughly enjoyed. I have also had the pleasure of teaching Health and Social Care, Literacy Skills, and PSHE to GCSE year groups so have experience teaching the lower school too. This means I am better able to assist you with the jump from Year 11 into the Sixth Form which can sometimes initially seem a bit daunting.

This is the perfect place to have the very best support to turn your hopes into possibilities and to make those possibilities a reality. I work closely with all Year 13 students to make sure they embark upon a pathway that is appropriate for them. You will also get additional support with this during enrichment lessons, PSHE lessons, and form time to complete UCAS and apprenticeship applications or to polish up your curriculum vitae. There are also several opportunities to attend out-of-school events such as university and apprenticeship shows, open days, and subject-related trips.

There is a very strong sense of community in the Sixth Form where students and staff get to know each other well. You will benefit from close pastoral guidance yet enjoy the independence and flexibility of a sixth former. Feel free to come and see me in my office any time of day and I will always do my best to help and support you. I pride myself on developing an inclusive community where every person, no matter their background, feels happy, safe, and able to perform to their best.

I am also a qualified mindfulness practitioner which I completed with Oxford University six years ago. Unfortunately, with anxiety issues on the increase, passing on the coping strategies from this qualification has been useful to students facing any difficulties in and out of the classroom. It also helps to come from a psychology background as I have a deep understanding of the complexity of the many psychological illnesses that exist.

Outside of work, you will find me trying new recipes as I love cooking shows, at the gym or spending quality time with my family and friends.



NOTES



Handwriting practice area with 18 horizontal lines. The first line is a solid brown header bar. The remaining 17 lines are white with a thin brown line above and below each line, creating a series of uniform writing spaces.



Handwriting practice area with 18 horizontal lines. The first line is a solid brown header bar. The remaining 17 lines are white with a thin brown line below each, creating a series of 17 rows for writing practice.



“

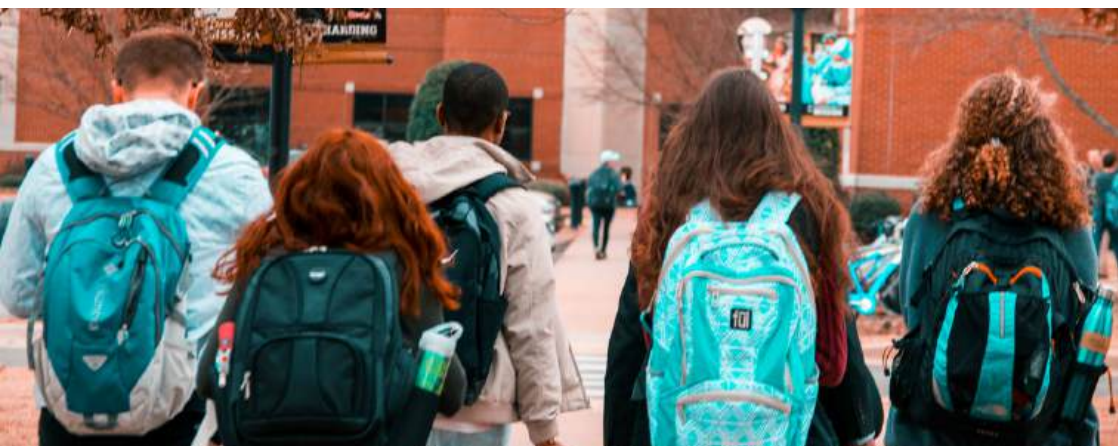
My time at Mosslands Sixth Form taught me resilience, strength, and leadership. I implement these skills on a daily basis. Teachers taught me that I could achieve anything I put my mind to and I did just that!

- Abbie Francom

Studying Biology at Edge Hill University

”

APPLY NOW



THE MOSSLANDS SCHOOL SIXTH FORM
Mosslands Drive, Wallasey, CH45 8PJ
0151 638 8131 | Mosslands.co.uk

MOSSLANDS.CO.UK